

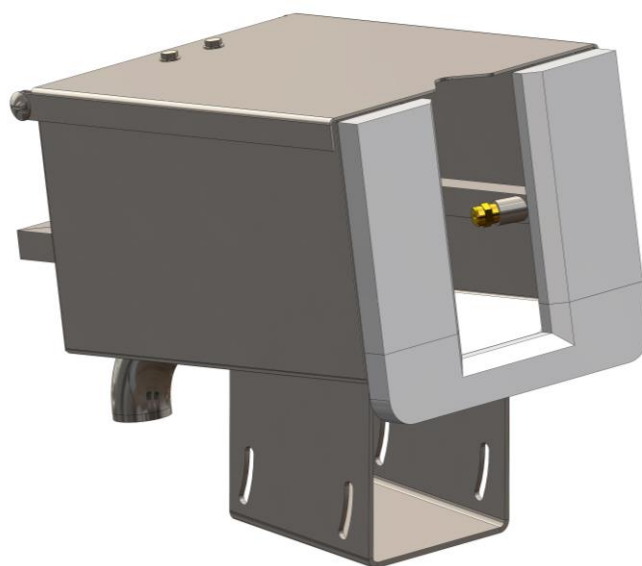
## SHEEP FLANK PULLER STERILIZER

**Sterilization by  
water spray  
with water  
> 65°C**

**Optimized water  
and energy  
consumption**

**Optimized  
interface to  
insert the sheep  
flank puller**

**Automatic start  
with inductive  
sensor**



### Main characteristics

Cleaned product	Sheep flank puller
Height	325 mm
Width	232 mm
Depth	408 mm
Watertightness	IP66
Cycle duration	10s to 60s
Raw material	Stainless steel
Additional products	Sheep flank puller, exists also with Presto® start (5833)
TERMET part number	4186